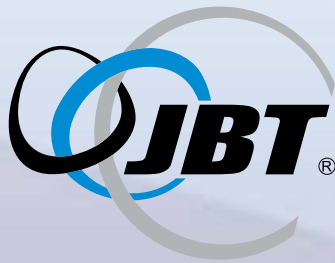




JET TALK

Customer Newsletter | Spring 2020



JBT AeroTech Aftermarket & Spare Parts

Inside This Edition

Welcome to JetTalk

Preparing for Summer

Sales Offers | JetAire® & PCA Products

JBT Innovations | iOPS®

JBT Innovations | Jetpower® Cable Reel

Featured Safety Products

COVID-19 Response from JBT's CEO

Service Bulletins & Safety Alerts



Welcome to JetTalk

Dear JBT AeroTech Customers,

Welcome to the Spring 2020 edition of the JetTalk Newsletter, brought to you by JBT's Aftermarket and Spare Parts group.

We are living in the most difficult time that most of us have ever experienced. It's been amazing to see how people around the globe have united in the fight against this virus pandemic. As a supplier to the air transportation industry, we understand the critical nature of this business and are striving to meet your needs. JBT is dedicated to supporting our equipment in the field to ensure it continues to be highly reliable, easy to operate and easy to maintain. We are committed to working with you to solve problems and find solutions that keep your businesses moving forward. We are working closely with our supply chain to ensure we receive the necessary parts and materials to avoid impacts that will delay our ability to support your needs. We are dedicated to helping you in any way possible and we will get through this, together.

For those of you who contributed to our surveys in the past, thank you for your feedback. We hope that each JetTalk edition provides you with value and I encourage you to take our brief survey, link shown below. This information helps us improve future editions of JetTalk so we can better serve you, our customers.

Thank you,

A handwritten signature in black ink, appearing to read 'Scott Ezola'.

Scott Ezola

Director | Aftermarket & Spare Parts

AFTERMARKET & SPARE PARTS

Contact us today for more information on our products and services, including OEM replacement parts, conversions & refurbishments, inspections, and training.

1-800-827-5515 or Jetway.Parts@JBTC.com

FIELD SERVICES

For more information on warranty claims, troubleshooting, Service Bulletins, and Safety Alerts, contact our Field Services team today.

***1-800-827-4414 or
FieldTechSupport.Jetway@JBTC.com***



Preparing for Summer | PCAir JetAire® Conditioned Air

Spring is here and summer is right around the corner! And although it depends on your location, this seasonal transition usually comes with some changes in temperature and weather. Below are some tips, tricks, and advice that should help prepare your equipment and operations for the coming months.

Tip 1

Check your PCAir filters and clean or replace them, if necessary.

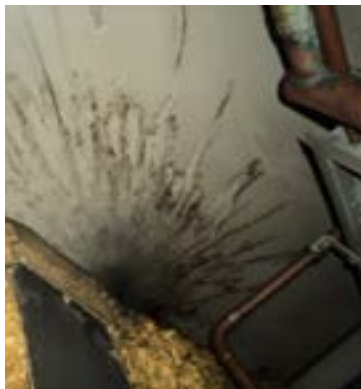


Tip 3

Test interlocks and smoke detectors for proper operation. Replace if necessary.

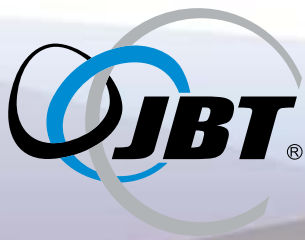
Tip 2

Test your cabin sense and discharge sense probes. Replace if necessary.



Tip 4

Inspect hoses and plenums for air leaks. Replace or repair if necessary.



Aftermarket Sales Discounts

JetAir® & Related PCAir Products

We are currently offering a wide variety of **Pre-Conditioned Air** parts, kits, and components at **discounts of 20%* or more!** Below are a few of our best-selling products, however, these are not the only PCAir products being offered a discounted price. For pricing and additional information, please contact a JBT Aftermarket Sales Rep.

PCAir Discounts of 20% or More!

Just call 1-800-827-5515 or email Jetway.Parts@JBTC.com



COMPRESSORS

30-Ton Danfoss Compressor (Scroll Type, Oil-Charged POE) (PN# 3709677)

15-Ton Danfoss R22 Compressor (Scroll Type, Oil-Charged) (PN# 3708912)

15-Ton Trane Compressor (Scroll Type, Oil Charged) (PN# 3630985)

FILTERS

LBAC Inlet Air Filter (PN# L101315)

30T-HPC Element Inlet Filter (PN# 3659058)

Permanent Air Filter 20x28x1 (PN# 3653981)

SENSORS

Temperature Sensor Discharge Assembly (1KOHM) (PN# 512626)

Ambient Temperature Sensor with Plug (PN# 507279)

MISCELLANEOUS

Condensor Coil Primary/Secondary (50T-SD 5 Row) (PN# 507988)

Damper Valve Assembly (14") (PN# 510056)

PCAir Smoke Detector (SL-2000-N) (PN# 3720460)

Aircraft Temperature Probe Assembly (PN# 506160)

**Discounts valid only while supplies last. Offers are subject to change.*



Innovations | iOPS®

iOPS® is the comprehensive management technology from JBT for monitoring gate and ground support equipment and operations. Bringing real-time, actionable information to decision-makers on computers and mobile devices.



SAVE MONEY

- Minimize aircraft turnaround times*
- Reduce APU fuel burn*
- Keep equipment fully functional at the gate and on the ramp*



IMPROVE EFFICIENCIES

- Monitor equipment operators and practices – enhance safety and efficiencies*
- Gather meaningful accident data, improve training*
- Access real-time data on equipment status, faults, and operations*
- Compatible with computers and mobile devices*
- Track mobile equipment usage, location, and speeds*
- Geo-fencing keeps equipment where you want it*



SAVE TIME

- Enhance diagnostic capabilities*
- Shorten repair times*
- Effectively manage parts requirements and inventories*



Innovations | Jetpower® Cable Reel

JBT's Jetpower® Cable Reel is an innovative product designed to simplify the everyday operation of your Jetpower units. With its great reliability, simple and robust design, and easy operation, it's ***your “reel” cable solution.***



Extend cable life

***Protects cable between
aircraft turns***

***Easily integrates with
Jetpower designs***

***Simplifies 400 Hz cable
management – turn off the
APU faster***

***One touch power
activation***

***Deploy only the cable
needed***

***Less exertion for ground
crews – assists with cable
movement***

Highly Reliable

Easy to Operate

Easy to Maintain





Featured Safety Products

With its customer focus and continuous improvement culture, JBT offers safety-related enhancements and upgrades for its products. In this edition, we are focusing on ground power equipment and bridge sensors. Below are examples of features available with new products and also offered as retrofits for legacy equipment when technologically feasible. If you're interested in learning more about these, or any of our other safety solutions, please contact us today!

GROUND POWER SUPPORT & SAFETY

We supply a variety of cables, connectors and other hardware to bring out optimal performance and help prevent your Ground Power Units from becoming increasingly dangerous safety hazards.



Popular GPU Support & Safety Products

Description	Number
400 Hz Cable Sling Assembly	2133038
Fairlead Roller Hoist Kit*	2139090.01
*Prevents cables from becoming worn at extreme angles	



SENSORS

Sensors and detection systems designed to reduce potential collisions with the PBB involving aircraft, other PBBs, or ground support equipment.

Popular Sensor Products

Description	Number
Proximity Bumper Sensor	2960574.02
Aircraft Proximity Sensor Kit	2954543.02
Rotating Position Sensor	3736681



JBT Response to COVID-19 Outbreak

Message from Tom Giacomini, JBT Chairman and CEO

To view this message on the JBT website, [click here](#).

The global COVID-19 pandemic has presented our communities with unprecedented challenges and human tragedies. At JBT, our thoughts remain with all affected by this crisis.

As a leading global solutions provider and critical supplier to the food and air transport industries, our entire JBT team remains committed to supporting our customers around the world every day. To that end,

- We have taken significant steps to ensure continuity of our operations, and wherever possible and permitted, our facilities remain open and our team members remain accessible for our customers;
- We have taken all appropriate actions to keep our employees, customers and partners safe, doing our best to follow evolving government and world health regulations and guidelines. We also continue to abide by all customer-specific requests in terms of operating protocols, hygiene, and site visits;
- We have implemented operational changes and protocols in each of our businesses to be even more responsive to our customers, so that we can continue to provide the world-class equipment and service they expect from JBT;
- We continue to proactively connect with all of our key suppliers to make every effort to ensure continuity of supply for materials and services, so that we can maintain appropriate inventory and service levels; and
- We have implemented additional options for customers to communicate with our team members in all key functions, including extended support hours and remote support options.

We know how mission-critical our customers' businesses are to feeding the world and ensuring efficient flow of essential goods. JBT values the trust our customers have placed in us, and our team members remain resolute in supporting you through this difficult time.

Thank you to our employees, customers, suppliers and other business partners. Working together tirelessly, with fortitude, to solve problems each day, all while facing the personal challenges of this pandemic...inspires us all.



Service Bulletins & Safety Alerts

Below you will find a list of our most-recent Service Bulletins and Safety Alerts. We have also included a copy of our latest Service Bulletin, Teleradial Bridge Cab Rotation Pivot Inspection, at the end of this edition of JetTalk.

If you have questions or would like additional information regarding any of the Service Bulletins or Safety Alerts we have issued, please use the contact information listed below.

FIELD SERVICES: 1-800-827-4414 | FieldTechSupport.Jetway@JBTC.com

SERVICE BULLETINS

Bulletin Number	Description	Year
111(M)	Teleradial Bridge Cab Rotation Pivot Inspection	2020
110(M)	Rooftop Fall Protection System 2011	2011
109(M)	Vertical Drive Ball Screw Inspection – Both Single and Double Column	2008
108(M)	Baggage Buddy Cage Inspection	2008
PCA-3	Electric Heater Limit Circuits	2002

SAFETY ALERTS

Bulletin Number	Description	Year
8(M)	PBB Wheel Carriage - RAMP Safety Procedures	2017
7(M)	Incorrect Crimping on Replacement Hoist Cable Assembly (Limited Distribution)	2016
6(M)	Incorrect Assembly of Switching Mechanism on Eaton Rotary Switch (Limited Distribution)	2015
5(M)	Development of Operational Safety Procedures (rewritten)	2011
4(M)	400Hz Safety Interlock Override (rewritten)	2011
3A(M)	400Hz Safety Interlock Override (revised)	2005
3(M)	400Hz Safety Interlock Override	2004
2(M)	Development of Operational Safety Procedures	2004
1(M)	Critical Weld Inspection on PBBs	2001



Thank You

We hope you enjoyed this issue of JetTalk. We created this newsletter for you, our customers, and we want you to benefit from it as much as possible. Please help us improve future editions by completing our brief survey, which can be accessed using the link below.

THANK YOU!

Your Aftermarket & Spare Parts Team at JBT AeroTech

Jetway.Parts@JBTC.com

1-800-827-5515 (United States)

+44-20-8587-0666 (United Kingdom)

+852-3966-1360 (Hong Kong)



You are receiving this emailed newsletter because you have provided us your email or you have previously done business with John Bean Technologies Corporation or one of its affiliated companies. This email may be considered an advertising or promotional message. If you no longer wish to receive advertising or promotional emails from John Bean Technologies Corporation or its affiliated company, please [click here](#) to reply to this e-mail, leaving "Unsubscribe" in the subject line. There is no need to provide additional information in the message body; simply click Send. To read our Privacy Policy, please [click here](#).

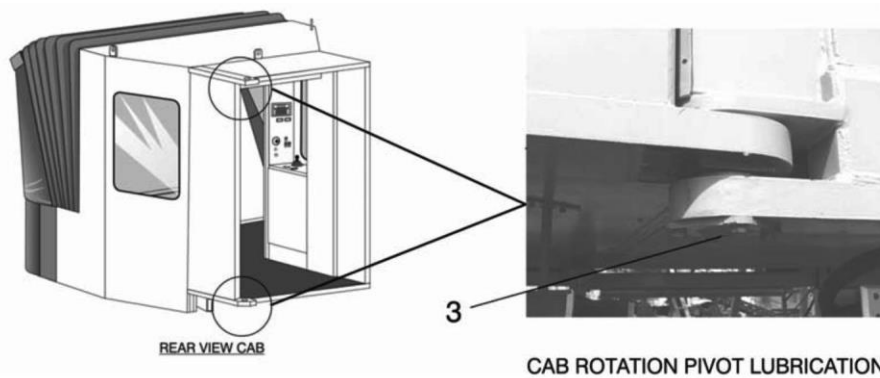
JETWAY SYSTEMS®
Passenger Boarding Bridges

SERVICE BULLETIN #111

Teleradial Bridge Cab Rotation Pivot Inspection

A. Description

JBT AeroTech, Jetway Systems® has become aware there was a recent failure of a Teleradial Bridge cab upper hinge pin, bushing, and hinge plate caused by noncompliance to follow JBT AeroTech, Jetway Systems® recommended maintenance procedures regarding annual lubrication within the preventive maintenance checklists.



No	Lube Spec	Description	Frequency			Remarks
			Q	S	A	
1	3	Drive Chains	X			
2	3	Sprocket Shaft	X			
3	1	Side Pivot Point			X	

Lubrication:	1=Grease	2=Heavy Oil	3=Light Oil	4=Spray
--------------	----------	-------------	-------------	---------

Figure 1
(Lubrication recommendation of cab rotation pivot from Section 2-3,
Teleradial Multifunctional Passenger Boarding Bridge Operation and
Maintenance Manual, TP100006)

SERVICE BULLETIN #111Teleradial Bridge Cab Rotation Pivot Inspection

Failure to follow proper maintenance procedures led to severe wear and corrosion of the hinge pins, bronze bushings, and hinge plates. See Figure 1. The wear can cause the pin or hinge plate to fail causing the cab to drop to the ground resulting in serious equipment damage and possible injury to personnel.

To provide guidance on appropriate inspections, JBT AeroTech, Jetway Systems® is releasing this service bulletin to detail recommended inspection and repair procedures for the upper hinge pin, bronze bearing, and hinge plate.

B. Compliance

This service bulletin applies to all Jetway® Teleradial Passenger Boarding Bridges. Adherence to this service bulletin is MANDATORY.

**WARNING: INJURY OR DEATH**

Failure to follow these instructions may cause injury to maintenance personnel and/or gate agents and could cause damage to aircraft and airport equipment.

**WARNING: SAFETY AND LOCKOUT PROCEDURES**

Follow all local safety and lockout procedures. The equipment is made up of many mechanical systems and components – any or all of them can move at any time. Be alert when working on or close to the equipment to prevent damage to the equipment or injury or death to yourselves or others.

JETWAY SYSTEMS®
Passenger Boarding Bridges

SERVICE BULLETIN #111

Teleradial Bridge Cab Rotation Pivot Inspection



CAUTION: EQUIPMENT DAMAGE

Do not operate or service this equipment if you have not been trained and are not authorized to do so. Read this operation and maintenance manual and become familiar with the instructions in it before you operate or service this equipment. Operation or maintenance by unqualified personnel or failure to follow proper lockout – tag out procedures could damage the equipment or even aircraft.

Shut off all power to the bridge and secure the bridge cab and C tunnel with appropriately rated support frames and cranes. Ensure the cab and C tunnel are in line and securely immobilized before performing any of the procedures.

C. Cab Inspection and Corrective Action

1. Visually check for any rust and rusty water stains. This could indicate possible pin or bushing corrosion issues. If there are corrosion indicators as shown in Figure 2 below, there is likely excessive wear on the cab pin and/or bushing due to a lack of lubrication.

SERVICE BULLETIN #111Teleradial Bridge Cab Rotation Pivot Inspection

Figure 2

2. Visually inspect the bearing sleeve for wear on both the upper and lower hinge plates. If the pin is directly touching the inside of the hole in the hinge plate, the bearing is worn out. If the bearing is there, then perform the following measurement procedures.
3. With the bridge cab aligned with the C tunnel, measure the minimum gap between the outside diameter of the pin and the inside edge of the hole in the upper hinge plate attached to the C tunnel shown in Figure 3 or to the lower hinge plate attached to the cab as in Figure 4.

JETWAY SYSTEMS®
Passenger Boarding Bridges

SERVICE BULLETIN #111

Teleradial Bridge Cab Rotation Pivot Inspection

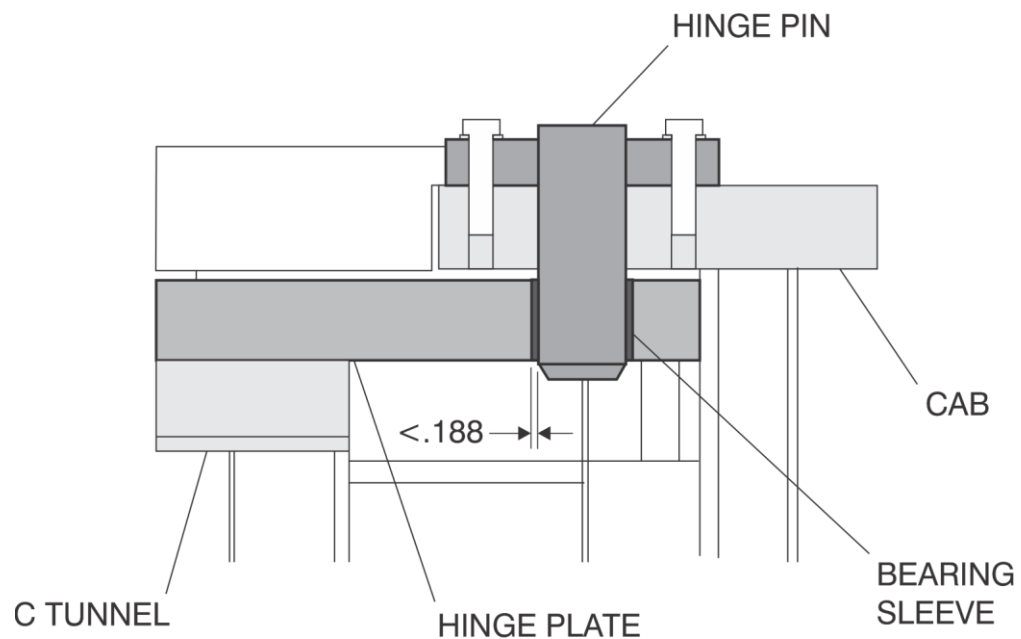


Figure 3

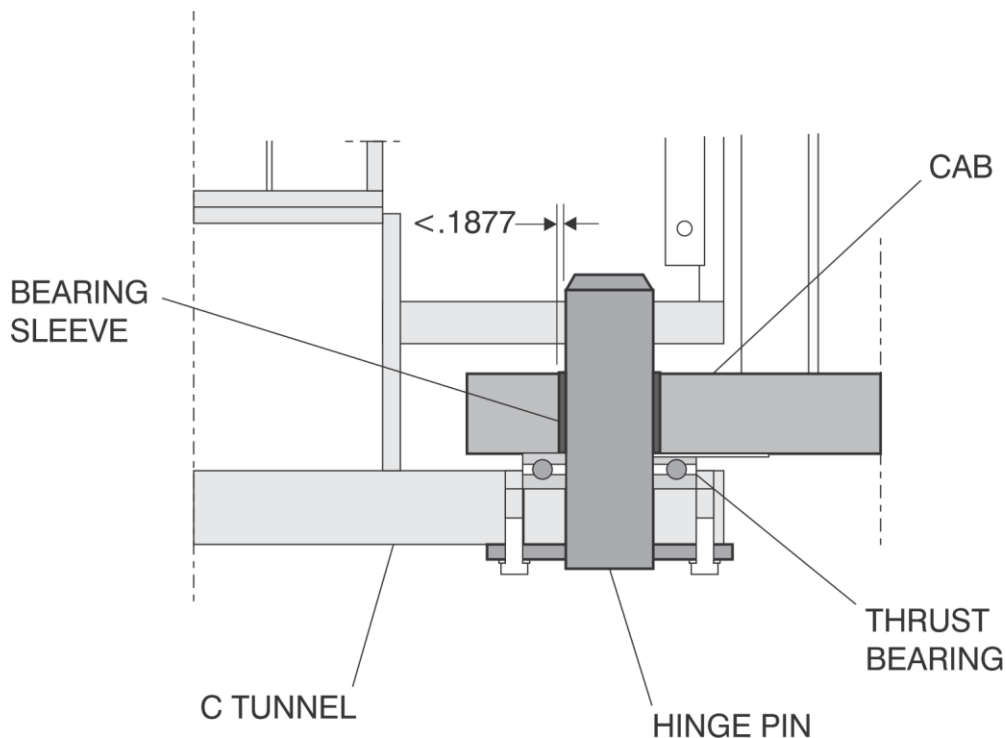
SERVICE BULLETIN #111Teleradial Bridge Cab Rotation Pivot Inspection

Figure 4

The diameter of the hole in the hinge plate should be 2.63 inches. The bearing sleeve has an inside diameter of 2.25 inches and an outside diameter of 2.63 inches. The upper and lower hinge pin diameter is 2.25 inches.

Because it is a tight fit, if the gap between the edge of the pin and the hole in the hinge plate is less than 0.188 inches, there is wear erosion on the sleeve. See Figures 3 and 4.

- a. If the maximum gap is less than 0.28 (Figure 5), the bearing sleeve is worn less than half way through and can continue to operate. Lubricate, inspect and measure the distance annually.

JETWAY SYSTEMS®
Passenger Boarding Bridges

SERVICE BULLETIN #111

Teleradial Bridge Cab Rotation Pivot Inspection

- b. If the maximum gap is greater than 0.28 (Figure 5), the bearing sleeve is either worn out or more than half way through and should be replaced.

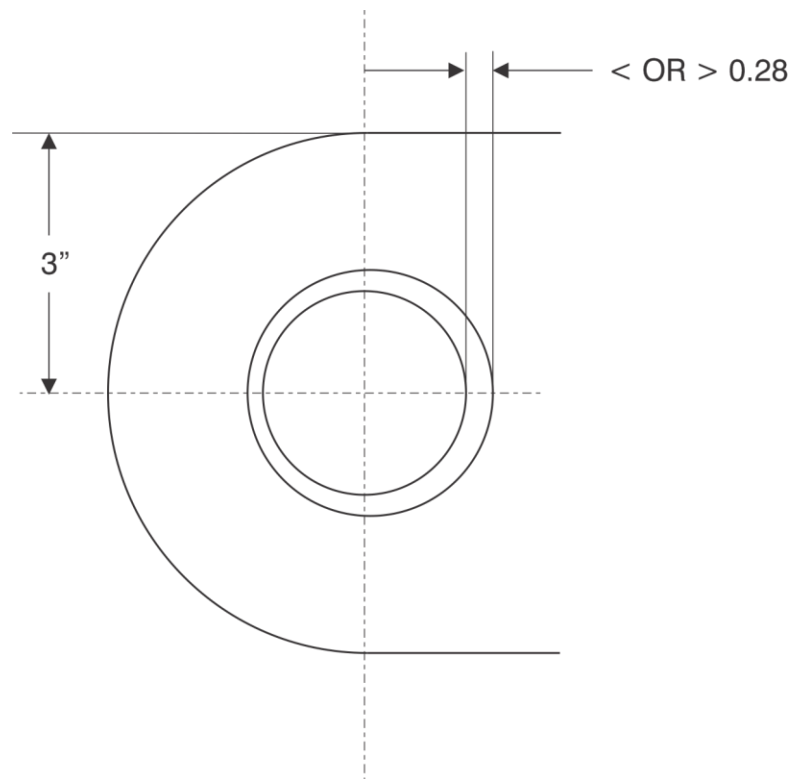


Figure 5

4. If the bearing is all worn out and non-existent, measure the largest diameter of the hole in the hinge plate (it may be oval shape). If the largest diameter is 2.63 inches (original hinge pin hole diameter), the procedure will only require the replacement of the bearing sleeve.
5. If there is too much wear on the pin hole in the upper hinge plate, the hinge plate will need to be cut and replaced. See Figure 6.

JETWAY SYSTEMS®
Passenger Boarding Bridges

SERVICE BULLETIN #111

Teleradial Bridge Cab Rotation Pivot Inspection

NOTE: If the lower hinge plate falls outside the tolerance in Figure 5 and stated in step 4, contact JBT for consultation.

6. To inspect the hinge pin, measure the gap between the outside diameter edge of the pin and the inside edge of the hole in the hinge plate. If there is no gap, the pin may be worn and will require an additional inspection. Remove the hinge pin from the assembly, and measure the diameter of the pin. If the diameter is less than 2.25 inches, the hinge pin has been worn and will require a new pin replacement.
7. Inspect the thrust bearing on the lower hinge plate by rotating the cab. Check for noise and/or smoothness in the cab rotation. If necessary, disassemble the lower hinge pin and visually inspect the thrust bearing.



Figure 6

JETWAY SYSTEMS®
Passenger Boarding Bridges

SERVICE BULLETIN #111

Teleradial Bridge Cab Rotation Pivot Inspection

To replace the upper cab hinge plate (ear bracket):

Note: Read and adhere to the warnings on pages 1 and 2 of this Service Bulletin before performing the following replacement procedure.

- a. Remove the bridge cab.
- b. Using an air arch, remove the damaged hinge plate from the tubing.
- c. Align the new hinge plate (2130427, shown in Figure 7) with the hinge pin as shown in Figure 8.



Figure 7
Upper Hinge Plate
P/N 2130427

JETWAY SYSTEMS®
Passenger Boarding Bridges

SERVICE BULLETIN #111

Teleradial Bridge Cab Rotation Pivot Inspection

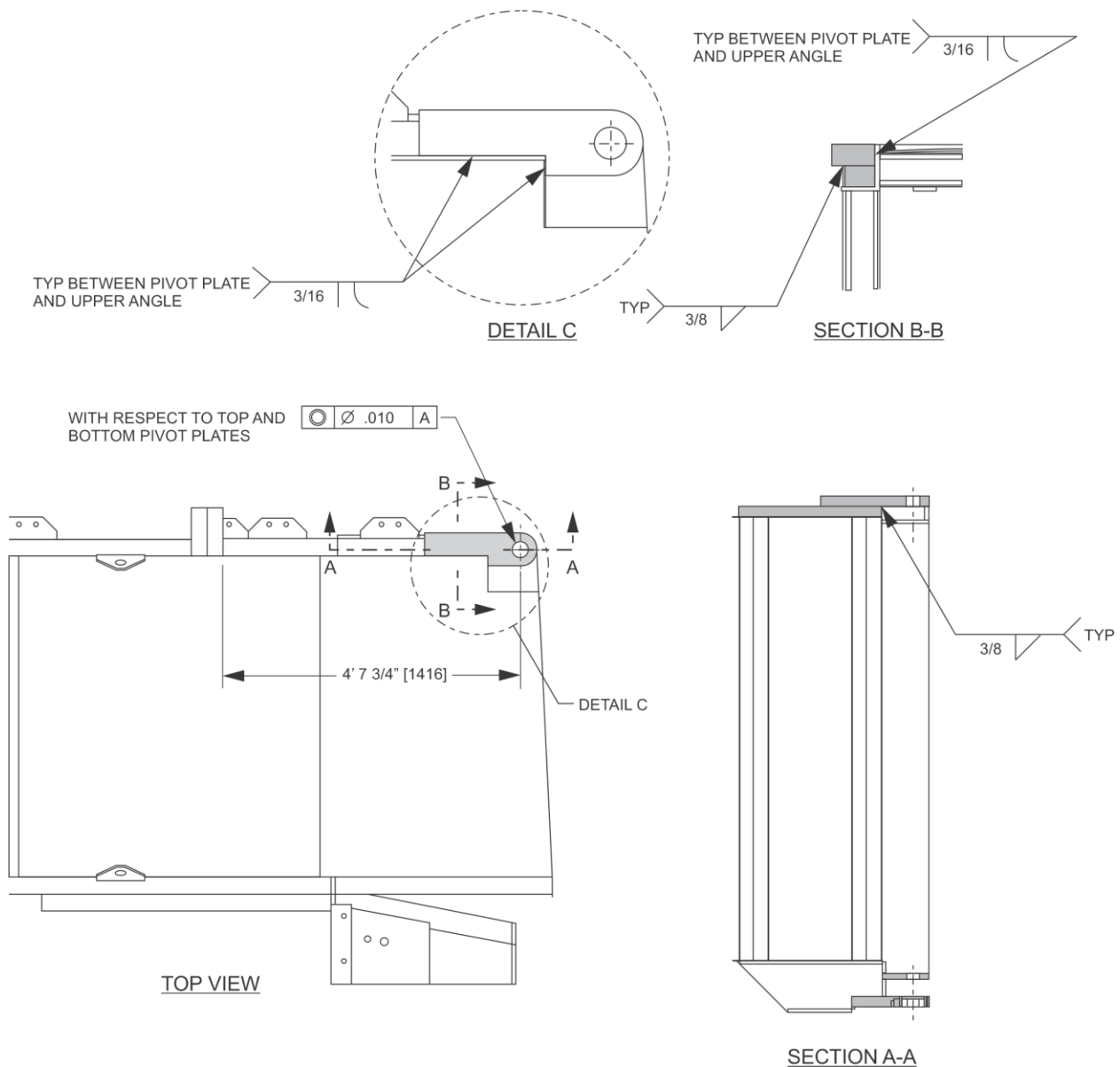


Figure 8

- d. Tack-weld the plate in place.
- e. Check the plate to pin alignment.

JETWAY SYSTEMS®
Passenger Boarding Bridges

SERVICE BULLETIN #111

Teleradial Bridge Cab Rotation Pivot Inspection

- f. Fully weld if aligned.
- g. Re-install the bridge cab.

Contact JBT for consultation.

PARTS LIST		
Part No.	Name	Description
2130427	Upper Hinge Plate	PL 2X6X1' 9
3643704	Bearing Sleeve	BRG SLV 2 1/4 IDX2.6295 ODX2 BRZ
2130768	Upper Hinge Pin	PIN HINGE CAB UPR TR
3645711	Lower Thrust Bearing	BRG THRUST BALL 2.75 IDX4.469 OD
2130769	Lower Hinge Pin	PIN HINGE CAB LWR TR