

# JetAire® 30 Ton, 45 Ton and 60 Ton Pre-conditioned Air Units



An Oshkosh Corporation Company

**JETWAY SYSTEMS®**  
For the Perfect Turn

# JetAire® 30, 45, and 60 Ton Capacity Pre-conditioned Air Units Technical Specifications

## Design Elements

JetAire® 30-60 ton units are ideal for most narrow to mid-body sized aircraft. The units all fit in the same frame size and share many common components. They can be bridge or stand-mounted and benefit the user through reduced pollution, fuel savings and less equipment on the ramp.

## Features / Benefits

- Energy Efficiency
- Consistent Temperature
- Reliability
- Reduced Noise
- Human Machine Interface (HMI) Screen with Intuitive Operating Controls
- Remote Wireless Data Access for convenient Operations and Maintenance monitoring

## Electrical

Unit	30 Ton	45 Ton	60 Ton
Voltage	480/60/3	480/60/3	480/60/3
Blower Size	25 HP/18.6 kW	30 HP/22.4 kW	40 HP/29.8 kW
Heater Size	36 kW	54 kW	72 kW
*RLA	91 Amps	128 Amps	173 Amps
*Unit Breaker	125 Amps (100 Amps**)	150 Amps	200 Amps

\*Values are calculated using ARI conditions and are not to be used for construction. Values are for reference purposes only.

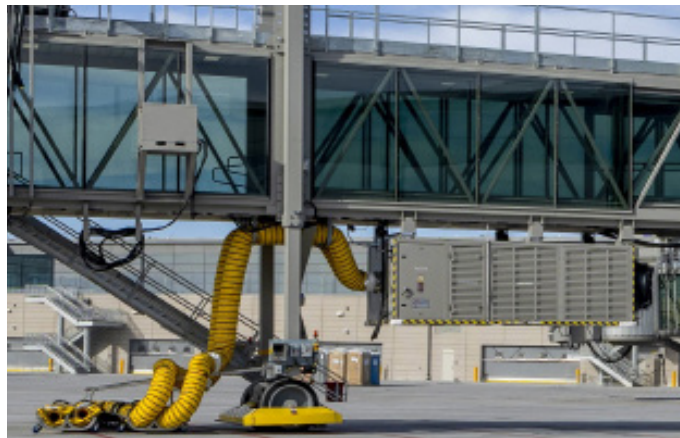
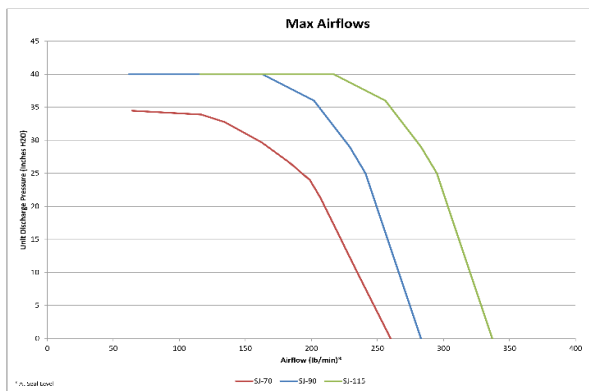
\*\* 100% Load rated unit breaker available for gates with supply power limitations

## Dimensions/Weight

Unit	30 Ton	45 Ton	60 Ton
Length	167 in (424 cm)	167 in (424 cm)	167 in (424 cm)
Width	88 in (225 cm)	88 in (225 cm)	88 in (225 cm)
Height	43 in (109 cm)	43 in (109 cm)	43 in (109 cm)
Weight	4500 lb	5000 lb	5500 lb
Sound Level	84 dBA @ 15 ft (4.6 m)	84 dBA @ 15 ft (4.6 m)	84 dBA @ 15 ft (4.6 m)

## Design Ambient

Unit	30 Ton / 45 Ton / 60 Ton
Humid - Dry Bulb	95° F (35° C)
Humid - Wet Bulb	76° F (24.4° C)
Dry - Dry Bulb	110° F (43.3° C)
Dry - Wet Bulb	70° F (21.1° C)



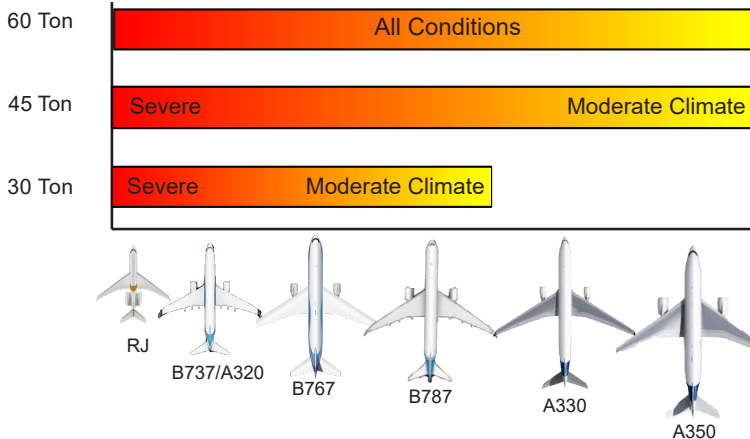
## Operational Performance

- Standard Airflow:
  - 30 Ton: 180 lb/min @ 20" H2O
  - 45 Ton: 240 lb/min @ 22" H2O
  - 60 Ton: 300 lb/min @ 22" H2O
- Max Airflow: 340 lb/min
- Max Pressure: 40" H2O
- Cooling Temperature: 25° F (-3.8° C) to 60° F (15.6° C)
- Heating Temperature: 80° F (26.7° C) to 130° F (54.4° C)

## Optional Equipment

- Apron Management System (AMS) Interface (Modbus TCP standard, other optional)
- Single or Dual Hose Outlets
- Heating (36/54/72kW for 480Volts)
- Aircraft Cabin and / or Bridge Temperature Probes
- Boarding Bridge Cooling and Heating capability and controls
- Hose Storage/Deployment Systems
- Delivery Hose (style and/or length) and Aircraft Couplings
- Severe Weather (SJ-X) models available with improved corrosion protection in extreme environmental conditions including Stainless Steel hardware, hot dip galvanized and powder coated steel parts, severe duty and extra protected components
- Configuration to service regional jets, narrow, and wide body aircraft

## Operating Capabilities (Air- Conditioner)for various ambient conditions



This information is provided for reference only and should not be used as technical specification data. This information may change without notice. Please contact an AeroTech sales office for formal technical information.

Website: [www.oshkosh-aero-tech.com](http://www.oshkosh-aero-tech.com)

